



FOR SALE. FOR LEASE.
FOR YOU.

FOR LEASE

Stand Alone Office Building in Olympia

www.rants-group.com



1000 Cherry Street SE, Olympia

\$12.60/sf Unserviced

Total Square Feet- 6,400

Can be divided to 3,400sf and 3,000sf

(south 1/2 and north 1/2)

Divided rental \$13.60/sf

- Lots of windows and natural light
- Work room includes built-in cabinets
- Open area and private offices
- No common area - all useable space!
- Easy access to freeway
- Walking distance to government offices
- Lots of onsite parking



Carolyn Graden, Commercial Broker
carolynt@rants-group.com



PHONE: 360.943.8060 • FAX: 360.943.9368 • 724 Columbia Street NW, #200, Olympia, WA 98501

This information, while obtained from sources we deem reliable, is not guaranteed. It is provided without any representation, warranty or guarantee, expressed or implied as to its accuracy. Prospective buyer or tenant should conduct an independent investigation and verification of all matters deemed to be material including, but not limited to, statements of income and expenses. Consult your attorney or other professional advisor.

1000 Cherry Street SE

For Lease



1000 Cherry Street SE

1000 Cherry St SE
Olympia WA 98501
Thurston County
Cross Street: 10th

Location

Market Area: Olympia
Building Status: Existing

Property Information

Tax ID #s: 78204000100
Total Land SF: 33,105
Acres: 0.76
Zoning: Downtown Business
Investment: No
Owner User: No

Building Information

Total Building SF: 6,400
Net Rentable Area: 6,400
Total Office SF: 6,400
Largest Contiguous SF: 6,400
Year Built: 1972
Sprinklers: No
Construction Type: Wood
of Floors: 1
A/C: Yes

Parking Information

Parking Ratio: 1:200

Space Information (Listing # 492037) | [Floor Plan](#)

Asset Class: Office	Rent Min: \$ 12.60	Agent: Carolyn Graden, CCIM
Lease Type: Modified Gross	Rent Max: \$ 13.60	Email: carolyn@rants-group.com
Status: Price Change	Avail SF: 6,400	Phone: (360) 943-8060
Availability: Vacant	Vacant SF: 0	Company: Rants Group, The
Date Avail:	Divide To SF: 3,000	Office Phone: (360) 943-8060
Floor: 1		
Entire Floor: Yes		
Sub Lease: No		
Move In: immediately		
Frontage: Cherry St.		

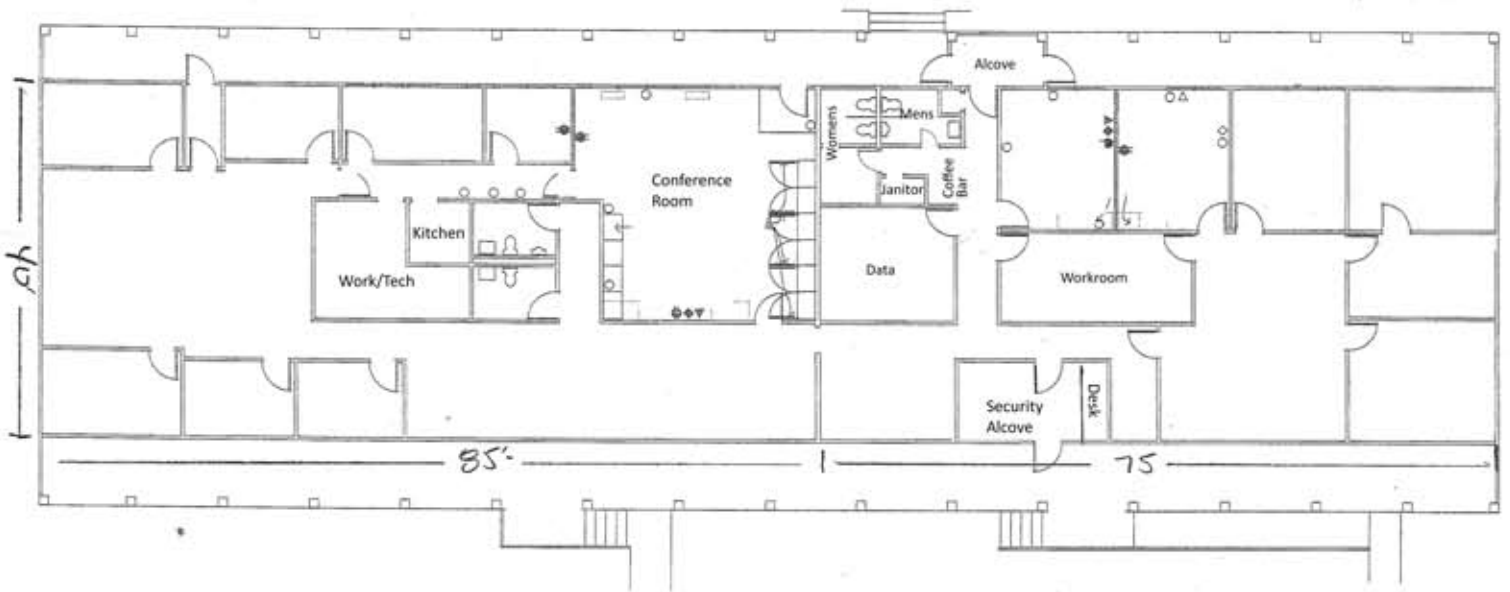
Listing Broker Comments:

Great stand alone building near capital campus, downtown and freeway access. You won't find a better FREE parking ratio in downtown. Building can be split 3000 (south 1/2) / 3400 (north 1/2). Upgraded in 2009 with new flooring, interior and exterior paint, etc. Attractive space with multiple private offices, open areas, reception. Local professional management to respond quickly to tenant needs. \$12.60 PSF if leasing the entire building.

Public Comments:

Cherry St. Office building

Great stand alone building near capital campus, downtown and freeway access. You won't find a better FREE parking ratio in downtown. Building can be split 3000 (south 1/2) / 3400 (north 1/2). Upgraded in 2009 with new flooring, interior and exterior paint, etc. Attractive space with multiple private offices, open areas, reception.



1000 Cherry Street

FLOOR PLAN

1/8" = 1'-0"

