



FOR SALE. FOR LEASE.
FOR YOU.

FOR LEASE

Rare Opportunity in Downtown Olympia!

www.rants-group.com



Mottman Building - 101 N. Capitol Way, Olympia

- Suites are fully serviced, including janitorial
- Located in the heart of historic downtown Olympia
- On city bus line & legislative shuttle



Suite 203

- 773 sf office space
- \$16.50 PSF, \$1,062/ month
- 1 private office, open/work area
- 1 parking space available at \$50/space per month

Suite M-101

- 440 square foot office space on mezzanine
- \$16.50/PSF, \$605 month
- Open layout with small counter and sink



Shelley Foltz, Commercial Broker
shelley@rants-group.com



Lisa Barker, Commercial Broker
lisa@rants-group.com



PHONE: 360.943.8060 • FAX: 360.943.9368 • 724 Columbia Street NW, #200, Olympia, WA 98501

This information, while obtained from sources we deem reliable, is not guaranteed. It is provided without any representation, warranty or guarantee, expressed or implied as to its accuracy. Prospective buyer or tenant should conduct an independent investigation and verification of all matters deemed to be material including, but not limited to, statements of income and expenses. Consult your attorney or other professional advisor.

Mottman Building

For Lease



Parking Information

Total: 30

Mottman Building
101 N Capitol Way
Olympia WA 98501
Thurston County
Cross Street: 4th Avenue

Building Information

| | |
|--------------------|--------|
| Total Building SF: | 19,200 |
| Net Rentable Area: | 19,200 |
| Total Office SF: | 19,200 |
| Year Built: | 1889 |
| Sprinklers: | Yes |
| Construction Type: | Brick |
| Building Class: | B |
| # of Buildings: | 1 |
| # of Floors: | 3 |
| # of Units: | 9 |
| # of Elevators: | 1 |
| A/C: | Yes |

Location

| | |
|---------------------------------------|----------|
| Market Area: | Olympia |
| Building Status: | Existing |
| Property Website Link | |

Property Information

| | |
|----------------|-----------------|
| Tax ID #s: | 78500400602 |
| Total Land SF: | 6,534 |
| Acres: | 0.15 |
| Investment: | Yes |
| Owner User: | No |
| Developer: | The Rants Group |

Space Information for Suite M101 (Listing # 494163)

| | | |
|---------------------------------|---------------------------------|--|
| Asset Class: Office | Days on Mkt: 19 | Agent: Lisa Barker |
| Lease Type: Full Service | Rent Min: \$ 16.50 /sf | Email: lisabarker@rants-group.com |
| Status: New | Rent Max: \$ 16.50 /sf | 2nd Agent: Shelley Foltz, CCIM |
| Availability: Occupied | Tot Monthly Rent: \$ 605 | Email: shelley@rants-group.com |
| Date Avail: | Avail SF: 440 | Office Phone: (360) 943-8060 |
| Floor: Mezzanine | Divide To SF: 440 | Phone: (360) 943-8060 |
| Suite: M101 | | Company: Rants Group, The |
| Entire Floor: No | | LOC: 3.0% |
| Sub Lease: No | | Exclusions: No |
| | | Last Modified: 8/12/2011 |

Listing Broker Comments:

Small office space in Historic Mottman Building. Space is on mezzanine. Layout is open and has small counter with sink. Fully serviced lease. One parking space available in building lot at \$50/month.

Public Comments: **Small Office Space in Downtown Olympia**
Small office space in Historic Mottman Building. Space is on mezzanine. Layout is open and has small counter with sink. Fully serviced lease. One parking space available in building lot at \$50/month.

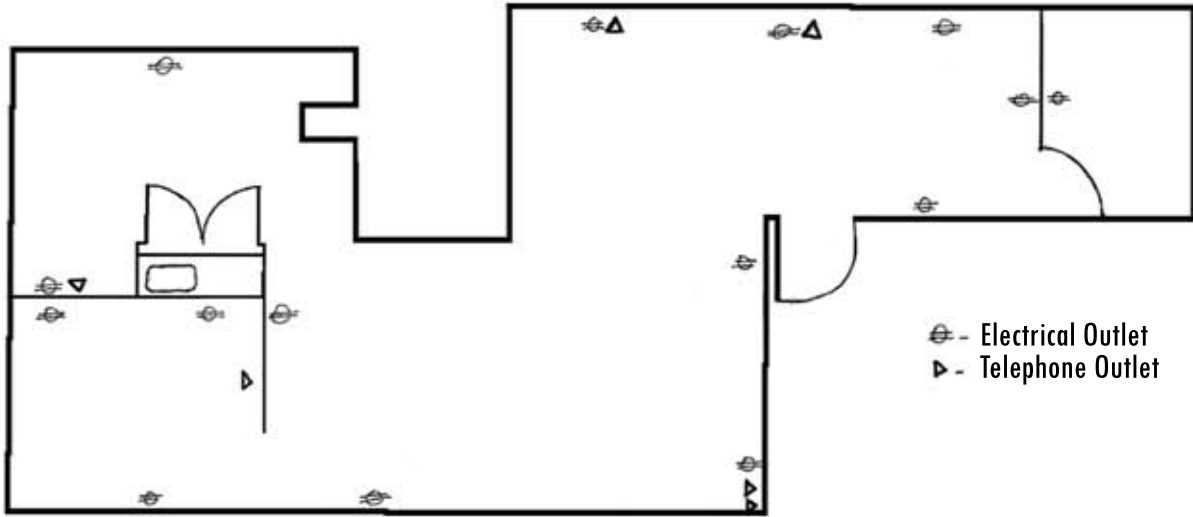
Space Information for Suite 203 (Listing # 486456)

| | | |
|---------------------------------|-----------------------------------|--|
| Asset Class: Office | Days on Mkt: 173 | Agent: Lisa Barker |
| Lease Type: Full Service | Rent Min: \$ 16.50 /sf | Email: lisabarker@rants-group.com |
| Status: Available | Rent Max: \$ 16.50 /sf | 2nd Agent: Shelley Foltz, CCIM |
| Availability: Available | Tot Monthly Rent: \$ 1,062 | Email: shelley@rants-group.com |
| Date Avail: 2/24/2011 | Avail SF: 773 | Office Phone: (360) 943-8060 |
| Floor: 2 | Vacant SF: 773 | Phone: (360) 943-8060 |
| Suite: 203 | Divide To SF: 773 | Company: Rants Group, The |
| Entire Floor: No | | LOC: 3.0% |
| Sub Lease: No | | Exclusions: No |
| Move In: Immediate | | Last Modified: 8/12/2011 |

Listing Broker Comments:

Nice small office space in Historic Mottman Building in the heart of Downtown Olympia. One private office and open area. Fully serviced, including janitorial. Building has an electrical surge protector. On city bus line and legislative shuttle. Parking available at \$50/space per month.

Public Comments: **Small Office Space in Downtown Olympia**
Nice small office space in Historic Mottman Building in the heart of Downtown Olympia. One private office and open area. Fully serviced, including janitorial. Building has an electrical surge protector. On city bus line and legislative shuttle. Parking available at \$50/space per month.



1/4" = 1'
Suite M - 101

