



## *Lilly Road Medical/Office Building*

- Great location on Lilly Road in close proximity to Providence St. Peter Hospital
- 12,672 square feet • \$18.00 psf
- Unserviced - tenant pays utilities, janitorial and interior/exterior maintenance
- Building is divisible to 1,296 sq. ft. with a variety of suite sizes available
- Warm shell, ready for tenant's design/build out.
- Tenant Improvements Negotiable
- Zoned Medical Services (MS)



Shelley Foltz, Commercial Broker  
[shelley@rants-group.com](mailto:shelley@rants-group.com)

### 155 Lilly Road

For Lease



**155 Lilly Road**  
 155 Lilly Road NE  
 Olympia WA 98506  
 Thurston County

#### Location

Market Area: Olympia  
 Building Status: Existing

#### Building Information

Total Building SF: 12,672  
 Net Rentable Area: 12,672  
 Total Office SF: 12,672  
 Largest Contiguous SF: 12,672  
 Year Built: 2006  
 Sprinklers: Yes  
 Construction Type: Wood  
 # of Buildings: 1  
 # of Floors: 1  
 A/C: Yes

#### Property Information

Tax ID #s: 56370000600  
 Total Land SF: 69,696  
 Acres: 1.60  
 Zoning: MS  
 Investment: No  
 Owner User: No

#### Parking Information

Parking Ratio: 1:230

#### Sustainability/Green Building

LEED Cert: No  
 Energy Star Cert: No

#### Space Information (Listing # 488653)

<b>Asset Class:</b> Office	<b>Days on Mkt:</b> 0	<b>Agent:</b> <a href="#">Shelley Foltz, CCIM</a>
<b>Lease Type:</b> Modified Gross	<b>Rent Min:</b> \$ 18.00 /sf	<b>Email:</b> <a href="mailto:shelley@rants-group.com">shelley@rants-group.com</a>
<b>Status:</b> New	<b>Rent Max:</b> \$ 18.00 /sf	<b>Office Phone:</b> (360) 943-8060
<b>Availability:</b> Vacant	<b>Tot Monthly Rent:</b> \$ 19,008	<b>Phone:</b> (360) 943-8060
<b>Date Avail:</b> 4/6/2011	<b>Avail SF:</b> 12,672	<b>Company:</b> Rants Group, The
<b>Floor:</b> 1	<b>Vacant SF:</b> 12,672	<b>LOC:</b> 3.0%
<b>Entire Floor:</b> Yes	<b>Divide To SF:</b> 1,296	<b>Exclusions:</b> No
<b>Sub Lease:</b> No		<b>Last Modified:</b> 4/06/2011
<b>Move In:</b> Immediately		

#### Listing Broker Comments:

Great Medical/Office Building. Warm shell, ready for tenant's design/build out. Great location on Lilly Road in close proximity to Providence St. Peter Hospital. Building is divisible with a variety of suite sizes. T.I.'s negotiable. Unserviced - tenant pays utilities, janitorial and interior /exterior maintenance. Landlord pays real estate taxes and insurance. Call listing agent for more information.

#### Public Comments:

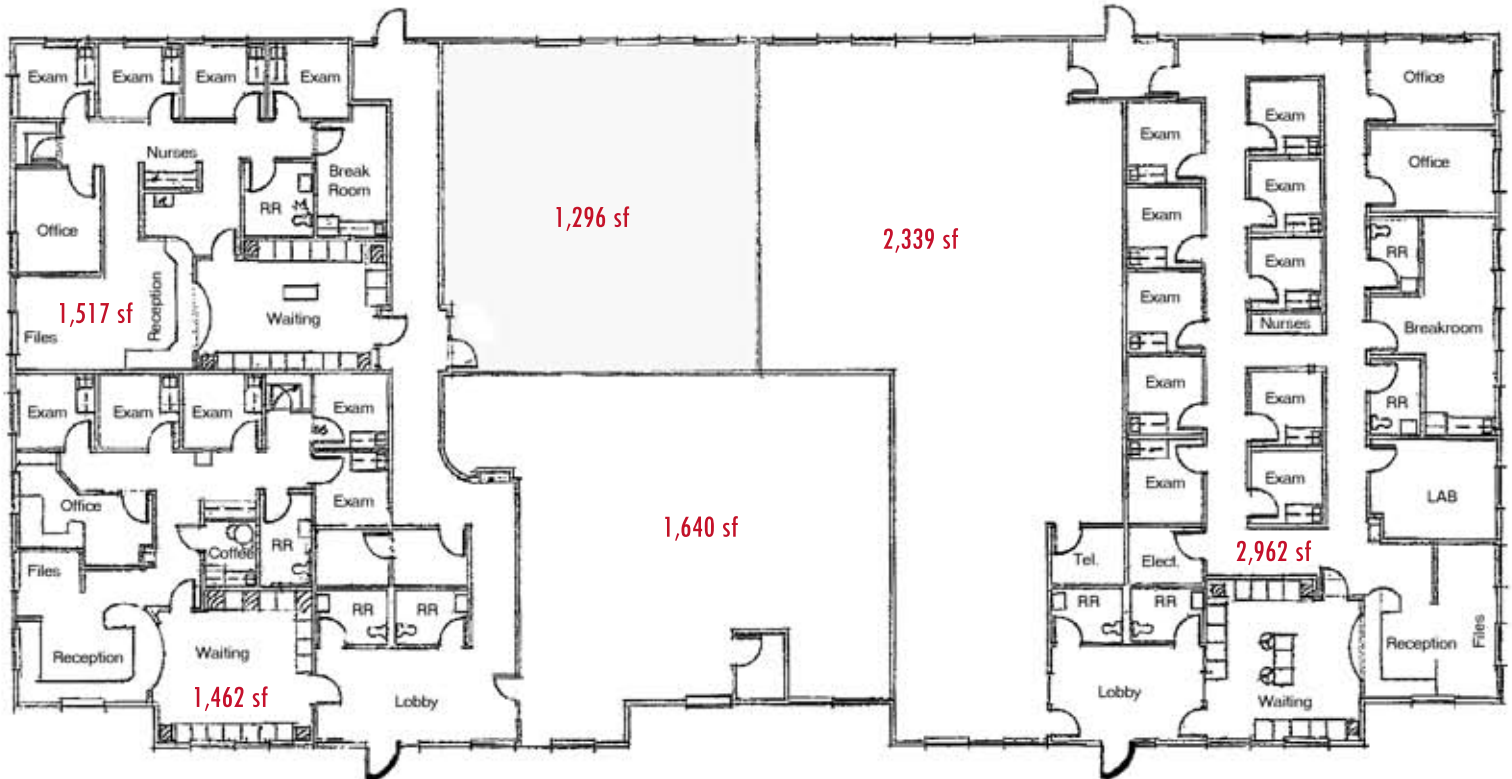
#### Great Medical/Office Building

Great Medical/Office Building. Warm shell, ready for tenant's design/build out. Great location on Lilly Road in close proximity to Providence St. Peter Hospital. Building is divisible with a variety of suite sizes. T.I.'s negotiable. Unserviced - tenant pays utilities, janitorial and interior /exterior maintenance. Landlord pays real estate taxes and insurance. Call listing agent for more information.

#### Search Tags:

Medical/Dental

*Sample Floor Plan*



*Building is in warm shell condition, with 12,672 sq. ft. of contiguous space. Divisible with a variety of floor plan options.*