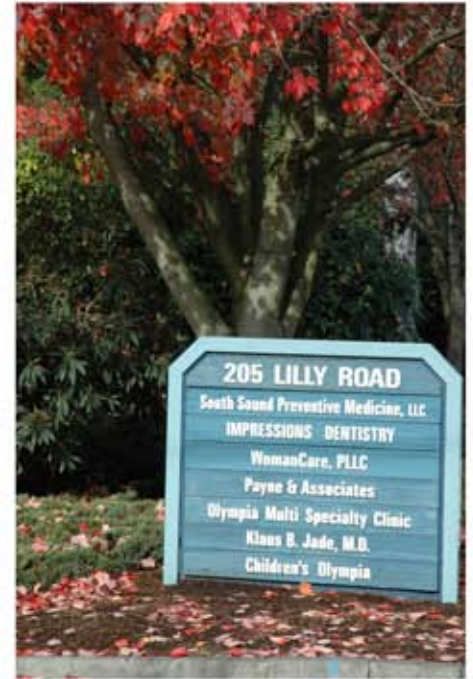




# FOR LEASE

205 Lilly Road NE, Bldg. A, #A, Olympia

[www.rants-group.com](http://www.rants-group.com)



- Medical Office Space Near Providence St. Peter's Hospital
  - 2,696 square feet
  - \$19.50/sf - \$4,381.00/month
- Unserviced - Tenant Pays Utilities & Interior Maintenance
- Layout Includes Reception Area, Exam Rooms, Offices and Restroom
  - Fronts on Lilly Road

**The Rants Group**  
724 Columbia St. NW, Suite 200  
Olympia, WA 98501

Phone (360) 943-8060  
Fax (360) 943-9368  
[www.rants-group.com](http://www.rants-group.com)

**Shelley Foltz**  
Commercial Agent  
[shelley@rants-group.com](mailto:shelley@rants-group.com)



This information, while obtained from sources we deem reliable, is not guaranteed. It is provided without any representation, warranty or guarantee, expressed or implied as to its accuracy. Prospective buyer or tenant should conduct an independent investigation and verification of all matters deemed to be material, including, but not limited to, statements of income and expenses. Consult your attorney, accountant, or other professional advisor.



# LEASE INFORMATION / SITE PLAN

## 205 Lilly Road, Bldg. A, #A, Olympia

205 Lilly Road - Building A

For Lease



205 Lilly Road - Building A  
205 Lilly Rd NE  
Olympia WA 98506  
Thurston County

### Building Information

**Building Status:** Existing  
**Total Building SF:** 4,099  
**Net Rentable Area:** 4,099  
**Total Office SF:** 4,099  
**Year Built:** 2000  
**Sprinklers:** No  
**Construction Type:** Wood  
**# of Buildings:** 1  
**# of Floors:** 1  
**A/C:** Yes

### Location

**Market Area:** Olympia

### Property Information

**Tax ID #s:** 11818140600  
**Total Land SF:** 57,934  
**Acres:** 1.33  
**Zoning:** medical services  
**Investment:** No  
**Owner User:** No

### Building/Property Comments

**Public Building Comments**  
Great location on Lilly Road.

Copyright © 2010 Commercial Brokers Association. All rights reserved.  
Some information contained herein may have been obtained from public records or other sources deemed reliable but is not guaranteed.

### Space Information for Suite A (Listing # 432012)

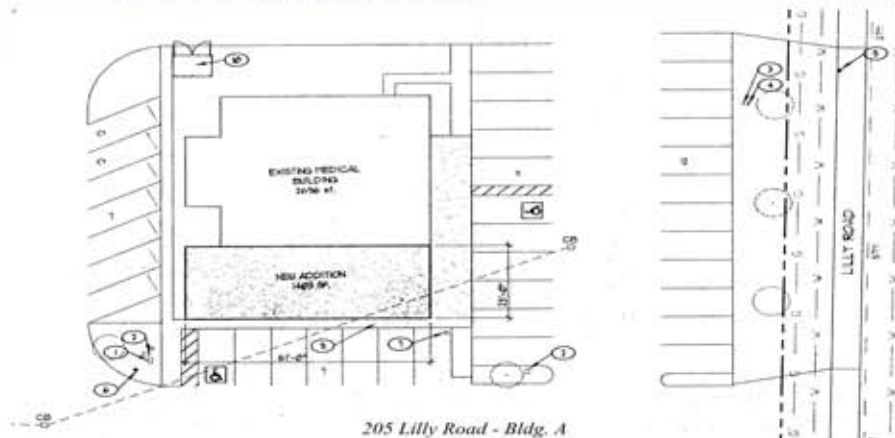
**Asset Class:** Office  
**Lease Type:** Modified Gross  
**Status:** Available  
**Availability:** Occupied  
**Date Avail:** 12/15/2009  
**Floor:** 1st  
**Suite:** A  
**Entire Floor:** No  
**Sub Lease:** No  
**Move In:** Immediately

**Days on Mkt:** 716  
**Rent Min:** \$ 19.50 /sf  
**Rent Max:** \$ 19.50 /sf  
**Avail SF:** 2,696  
**Vacant SF:** 0  
**Divide To SF:** 2,696

**Agent:** Shelley Foltz  
**Email:** [shelley@rants-group.com](mailto:shelley@rants-group.com)  
**Office Phone:** (360) 943-8060  
**Phone:** (360) 943-8060  
**Company:** Rants Group, The  
**LOC:** 3%  
**Exclusions:** No  
**Last Modified:** 1/11/2010

### Listing Broker Comments:

Medical office space near Providence St. Peter's Hospital. Layout includes reception, exam rooms, offices and restroom. Tenant improvements are negotiable. Fronts Lilly Road. Available June 2008. Currently occupied, please contact listing agent for showing.



**The Rants Group**  
724 Columbia St. NW, Suite 200  
Olympia, WA 98501

Phone (360) 943-8060  
Fax (360) 943-9368  
[www.rants-group.com](http://www.rants-group.com)

**CONTACT:**  
**Shelley Foltz**  
[shelley@rants-group.com](mailto:shelley@rants-group.com)

This information, while obtained from sources we deem reliable, is not guaranteed. It is provided without any representation, warranty or guarantee, expressed or implied as to its accuracy. Prospective buyer or tenant should conduct an independent investigation and verification of all matters deemed to be material, including, but not limited to, statements of income and expenses. Consult your attorney, accountant, or other professional advisor.

