



FOR LEASE

Medical Office Space

www.rants-group.com



3425 Ensign Road NE, #360, Olympia

Great medical office space located just across from Providence St. Peter Hospital.

- 727 Square Feet
- \$24.00/PSF, \$1,454.00/month, Fully Serviced
- Includes 1 office, open area and storage area
- Ample Parking

The Rants Group
724 Columbia St. NW, Suite 200
Olympia, WA 98501

Phone (360) 943-8060
Fax (360) 943-9368
www.rants-group.com

Shelley Foltz
Commercial Agent
shelley@rants-group.com



This information, while obtained from sources we deem reliable, is not guaranteed. It is provided without any representation, warranty or guarantee, expressed or implied as to its accuracy. Prospective buyer or tenant should conduct an independent investigation and verification of all matters deemed to be material, including, but not limited to, statements of income and expenses. Consult your attorney, accountant, or other professional advisor.



LEASE INFORMATION / FLOOR PLAN

3425 Ensign Road NE, #360, Olympia

Ensign Medical Center

For Lease



Ensign Medical Center
3425 Ensign Rd NE
Olympia WA 98506
Thurston County

Building Information

Building Status: Existing
Total Building SF: 19,435
Net Rentable Area: 19,435
Total Office SF: 19,435
Year Built: 1988
Sprinklers: Yes
Construction Type: Concrete, Steel
of Buildings: 1
of Floors: 3
of Elevators: 1
A/C: Yes

Location

Market Area: Olympia

Property Information

Tax ID #s: 11818140102
Total Land SF: 56,192
Acres: 1.29
Investment: No
Owner User: No
Owner: Ensign Medical Center
Co-Tenancy

Parking Information

Uncovered: 105
Total: 105
Parking Ratio: 5.4

Building/Property Comments

Public Building Comments

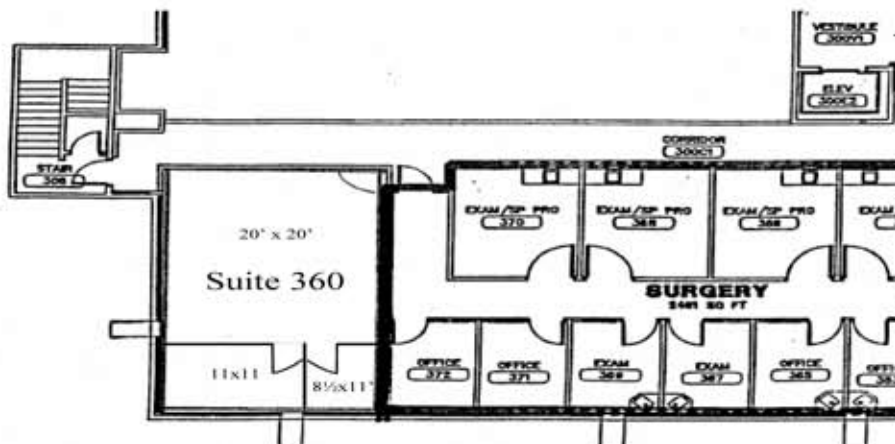
Upscale medical office space located across from emergency entrance to St. Peter Hospital on Ensign Rd. NE

Copyright © 2010 Commercial Brokers Association. All rights reserved.
Some information contained herein may have been obtained from public records or other sources deemed reliable but is not guaranteed.

Space Information for Suite 360 (Listing # 217330)

Asset Class: Office	Days on Mkt: 1,401	Agent: Shelley Foltz
Lease Type: Full Service	Rent Min: \$ 24.00 /sf	Email: shelley@rants-group.com
Status: Available	Rent Max: \$ 24.00 /sf	Office Phone: (360) 943-8060
Date Avail: 12/1/2009	Avail SF: 727	Phone: (360) 943-8060
Floor: 3	Divide To SF: 727	Company: Rants Group, The
Suite: 360		LOC: 2.5%
Entire Floor: No		Exclusions: No
Sub Lease: No		Last Modified: 1/11/2010
Terms: Three year minimum		

Listing Broker Comments: Great medical office space in beautiful medical office building. One office, open area, and storage area. Located across street from Providence St. Peter Hospital. Ample parking. Fully serviced.



The Rants Group
724 Columbia St. NW, Suite 200
Olympia, WA 98501

Phone (360) 943-8060
Fax (360) 943-9368
www.rants-group.com

CONTACT:
Carolyn Graden
carolyn@rants-group.com

This information, while obtained from sources we deem reliable, is not guaranteed. It is provided without any representation, warranty or guarantee, expressed or implied as to its accuracy. Prospective buyer or tenant should conduct an independent investigation and verification of all matters deemed to be material, including, but not limited to, statements of income and expenses. Consult your attorney, accountant, or other professional advisor.

