

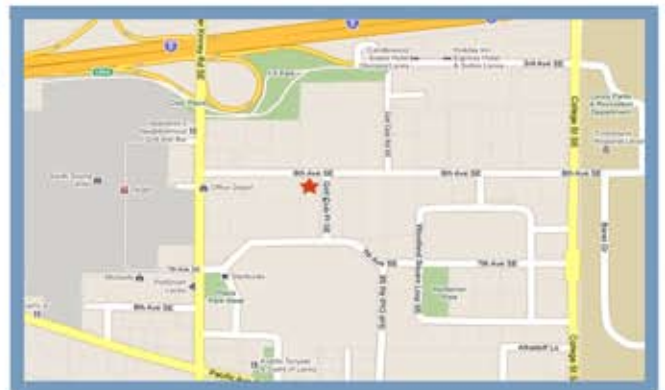
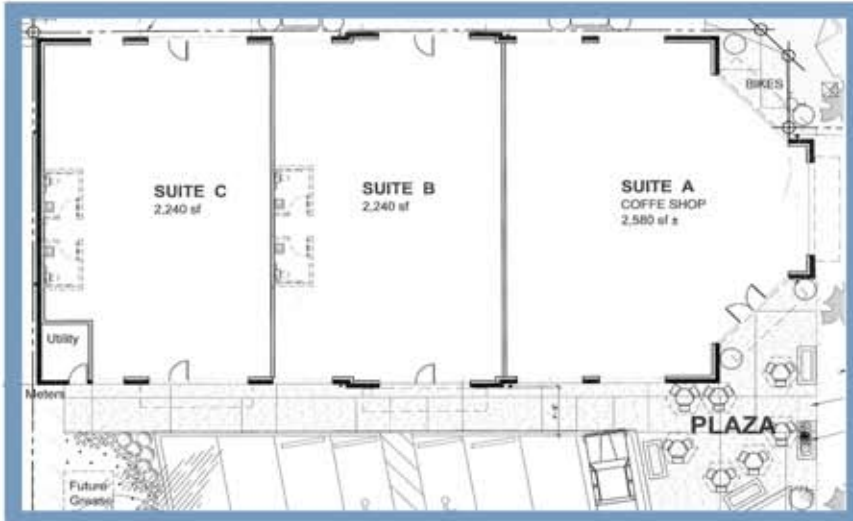


FOR SALE. FOR LEASE.  
FOR YOU.

# FOR LEASE

4219 6th Avenue, Lacey

[www.rants-group.com](http://www.rants-group.com)



- Two retail suites available: Suite B - 2,240 sf  
Suite C - 2,240 sf
- \$18.50 psf - NNN
- Tenant Improvement allowance \$20.00 psf
- In the heart of Lacey's business district
- Adjacent to Columbia Bank
- Close to St. Martin's College & City of Lacey Campus
- Suites B & C can be combined for a total of 4,480 sf



Shelley Foltz, Commercial Broker  
[shelley@rants-group.com](mailto:shelley@rants-group.com)



Nicole Potebnya, Commercial Broker  
[nicole@rants-group.com](mailto:nicole@rants-group.com)



PHONE: 360.943.8060 • FAX: 360.943.9368 • 724 Columbia Street NW, #200, Olympia, WA 98501

This information, while obtained from sources we deem reliable, is not guaranteed. It is provided without any representation, warranty or guarantee, expressed or implied as to its accuracy. Prospective buyer or tenant should conduct an independent investigation and verification of all matters deemed to be material including, but not limited to, statements of income and expenses. Consult your attorney or other professional advisor.

### Columbia Plaza

For Lease



**Columbia Plaza**  
 4219 SE 6th Ave  
 Lacey WA 98503  
 Thurston County  
 Cross Street: Golf Club Place

#### Building Information

Total Building SF: 7,100  
 Net Rentable Area: 7,100  
 Total Retail SF: 7,100  
 Year Built: 2007  
 Sprinklers: Yes  
 Building Class: A  
 # of Buildings: 1  
 # of Floors: 1  
 A/C: Yes

#### Location

Market Area: Lacey  
 Building Status: Existing  
[Property Website Link](#)

#### Property Information

Tax ID #s: 11817430400  
 Total Land SF: 62,290  
 Acres: 1.43  
 Zoning: CBD 1  
 Investment: No  
 Owner User: No  
 Expenses: \$ 5.40

#### Retail Information

Center Type: Mixed Use

#### Space Information for Suite B, C (Listing # 236073)

Asset Class: Retail  
 Lease Type: NNN  
 Status: Available  
 Availability: Available  
 Date Avail: 9/1/2011  
 Suite: B, C  
 Entire Floor: No  
 Sub Lease: No  
 Move In: Immediately  
 Frontage: 6th Avenue SE

Days on Mkt: 1,845  
 Rent Min: \$ 18.50 /sf  
 Rent Max: \$ 18.50 /sf  
 NNN Expenses: \$ 5.40  
 Avail SF: 4,480  
 Vacant SF: 4,480  
 Divide To SF: 2,240

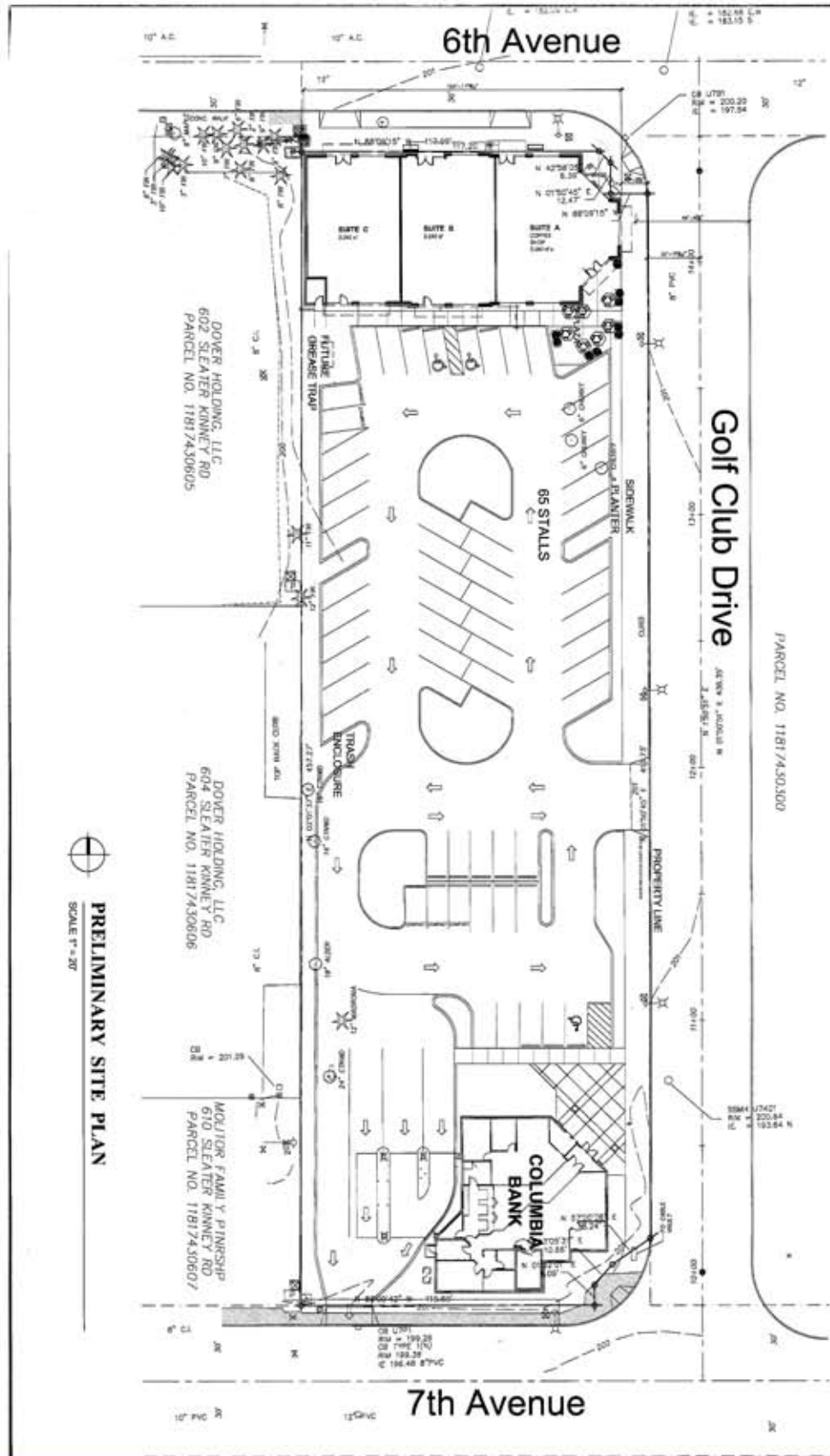
Agent: [Shelley Foltz, CCIM](#)  
 Email: [shelley@rants-group.com](mailto:shelley@rants-group.com)  
 2nd Agent: Nicole Potebnya  
 Email: [nicole@rants-group.com](mailto:nicole@rants-group.com)  
 Office Phone: (360) 943-8060  
 Phone: (360) 943-8060  
 Company: Rants Group, The  
 LOC: 3%  
 Exclusions: No  
 Last Modified: 9/01/2011

#### Listing Broker Comments:

2 (shell-state) suites available ~ Suite B 2,240± ~ Suite C 2,240±.. Can be combined for 4480 square feet.

#### Public Comments:

**Capture The Opportunity in this FANTASTIC Location**  
 2 (shell-state) suites available ~ Suite B 2,240± ~ Suite C 2,240±.. Can be combined for 4480 square feet.



This information, while obtained from sources we deem reliable, is not guaranteed. It is provided without any representation, warranty or guarantee, expressed or implied as to its accuracy. Prospective buyer or tenant should conduct an independent investigation and verification of all matters deemed to be material including, but not limited to, statements of income and expenses. Consult your attorney or other professional advisor.