



## Trails End Industrial Plaza

- Four Parcel Industrial Park
- 2 lots of **0.9 acres** • **\$284,134/lot**
- 2 lots of **1.0 acres** • **\$339,256/lot**
- Can be combined or purchased separately
- Ready for construction
- Zoned Light Industrial



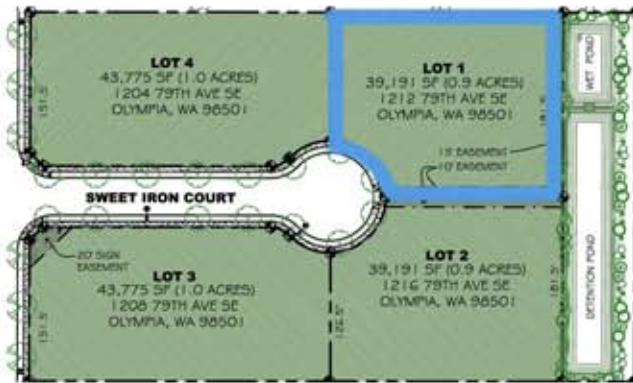
Shelley Foltz, Commercial Broker  
shelley@rants-group.com



Nicole Potebnya, Commercial Broker  
nicole@rants-group.com

### Trails End Industrial Plaza - Lot 1

CBA ID # 493484



**List Price:** **\$ 284,134**  
**Status:** Available  
**Asset Class:** Industrial, Land

#### Listing Information

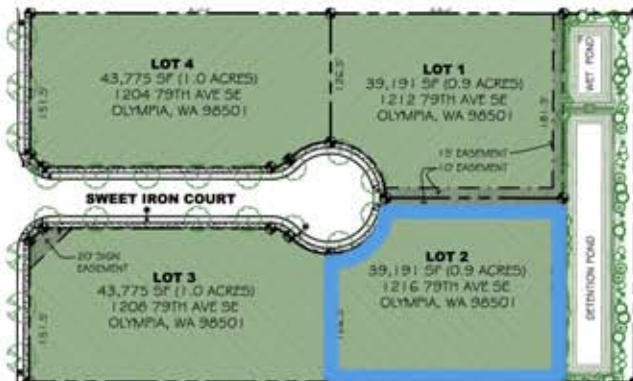
**Days on Market:** 101  
**Land \$/SF:** \$ 7.25  
**Land \$/Acre:** \$ 315,809.17  
**SOC:** 3.0%  
**SOC Exclusions:** No  
**Call Listing Agent:** Yes  
**View With Discretion:** No

#### Land Information

**Total Land SF:** 39,191  
**Acres:** 0.90  
**Zoning:** LT - Light Industrial  
**Land Use:** Office, Industrial

### Trails End Industrial Plaza - Lot 2

CBA ID # 493487



**List Price:** **\$ 284,134**  
**Status:** Available  
**Asset Class:** Industrial, Land

#### Listing Information

**Days on Market:** 101  
**Land \$/SF:** \$ 7.25  
**Land \$/Acre:** \$ 315,809.17  
**SOC:** 3.0%  
**SOC Exclusions:** No  
**Call Listing Agent:** Yes  
**View With Discretion:** No

#### Land Information

**Total Land SF:** 39,191  
**Acres:** 0.90  
**Zoning:** LT - Light Industrial  
**Land Use:** Office, Industrial

#### Additional Information

#### Public Property Comments

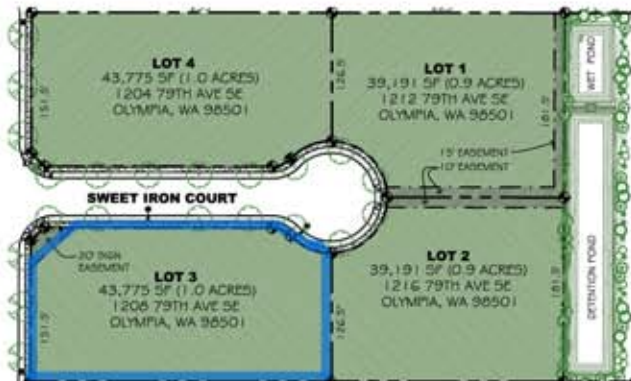
Trails End Industrial Plaza - 2 lots of 1.23 acres and 2 lots of 1.25 acres. Ready to build.

#### Listing Comments

Four parcel industrial park situated off 79th Avenue SE, south of Olympia Airport. All utilities stubbed to lots which have shared storm drainage. Road has been dedicated to the county and will be maintained by county. Monument sign planned for park. CCR's in place. Lots are ready for construction and listed for sale, or build to suit with lease back. Lots can be combined if your client needs 1.90 acres. Lots 1 & 2 are .90 (39,191 sf) acres each for \$7.25/psf and Lots 3 & 4 are 1.0 (43,775 sf) acres each for \$7.75/psf.

### Trails End Industrial Plaza - Lot 3

CBA ID # 493488



**List Price:** \$ 339,256  
**Status:** Available  
**Asset Class:** Industrial, Land

#### Listing Information

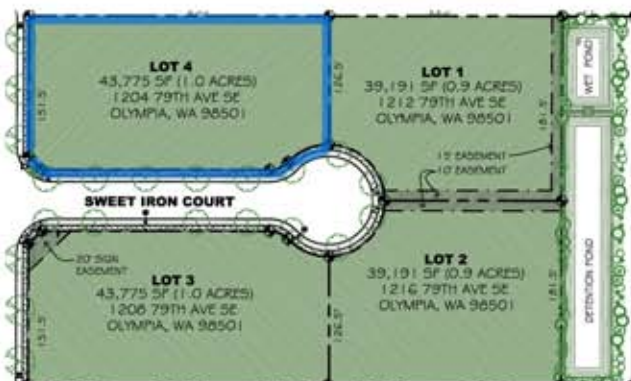
**Days on Market:** 101  
**Land \$/SF:** \$ 7.75  
**Land \$/Acre:** \$ 337,589.75  
**SOC:** 3.0%  
**SOC Exclusions:** No  
**Call Listing Agent:** Yes  
**View With Discretion:** No

#### Land Information

**Total Land SF:** 43,775  
**Acres:** 1.00  
**Zoning:** LT - Light Industrial  
**Land Use:** Office, Industrial

### Trails End Industrial Plaza - Lot 4

CBA ID # 493490



**List Price:** \$ 339,256  
**Status:** Available  
**Asset Class:** Industrial, Land

#### Listing Information

**Days on Market:** 101  
**Land \$/SF:** \$ 7.75  
**Land \$/Acre:** \$ 337,589.75  
**SOC:** 3.0%  
**SOC Exclusions:** No  
**Call Listing Agent:** Yes  
**View With Discretion:** No

#### Land Information

**Total Land SF:** 43,775  
**Acres:** 1.00  
**Zoning:** LT - Light Industrial  
**Land Use:** Office

#### Additional Information

##### Public Property Comments

Four parcel industrial park situated off 79th Avenue SE, south of Olympia Airport. All utilities stubbed to lots. Shared storm drain. Monument sign planned for park. CCR's in place. Lots are ready to build.

##### Listing Comments

Four parcel industrial park situated off 79th Avenue SE, south of Olympia Airport. All utilities stubbed to lots which have shared storm drainage. Road has been dedicated to the county and will be maintained by county. Monument sign planned for park. CCR's in place. Lots are ready for construction and listed for sale, or build to suit with lease back. Lots can be combined if your client needs 1.90 acres. Lots 1 & 2 are .90 (39,191 sf) acres each for \$7.25/psf and Lots 3 & 4 are 1.0 (43,775 sf) acres each for \$7.75/psf.

